

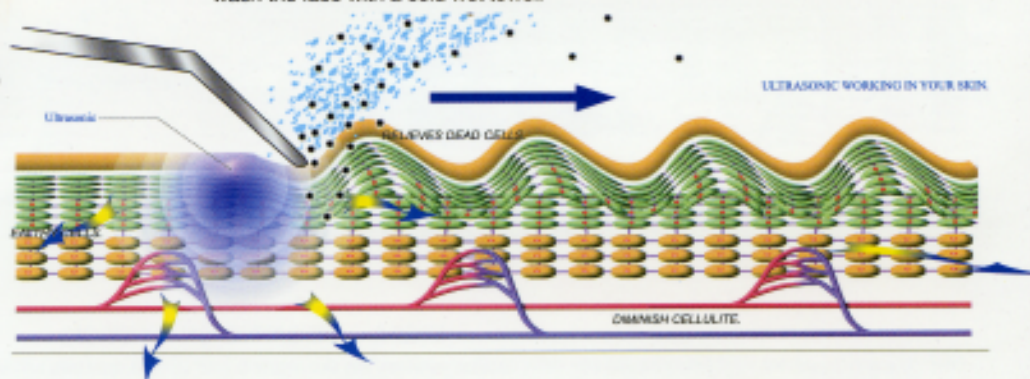
# STEP 1. HOW TO USE THE REJUVENA ULTRASONIC CARE UNIT



Magnesium (Mg+) and Aromatherapy (Lavender)

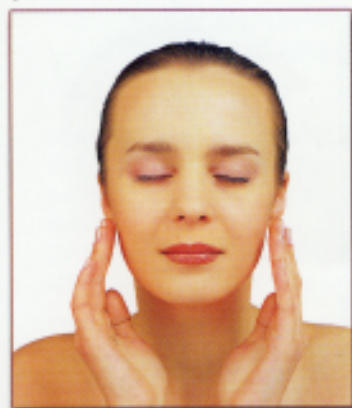
Clean and healthy skin starts with cleansing. The "Sonic" mode helps to retrieve the original healthy skin by removing the old dead cells and other contaminations.

- 1 • First, remove the make up, and wash your face.
- If possible, moisturize the horny layer with a steam towel or facial steamer.(this stage can be omitted)
- 2 • Apply pure O+ (pH 6.5) to the skin.
- Push the power button.
- Push the [sonic] button.
- If you want to the [High] level, push the [lowhigh] button(A red light is high, blue light is low)
- 3 • Gently Massaging. Apply the blade to your skin.
- 4 • The blade removes the old cells and other toxic substances by slowly moving the blade against the skin. (5~10 minutes)
- When Pure O+ runs out, apply more at any time.
- 5 • When you are finished using the [sonic] function, turn the power off, and then wash the face with a cold wet towel.



Use blade side

## STEP 1. SOFT PEELING FUNCTION.



### 1 Facial Care Spray

By applying pure O+(6.5pH) Ionized Mineral Water to your skin, a Healthy, Youthful Glow will result. Reduces the Appearance of Fine, Dry Skin Lines. (Preliminary Preparation)



Ultrasonic Mode

### 2 Start by Gently Massaging Forehead & Cheeks(Ultrasonic)

A slight stroking motion on the Forehead and cheeks, Short and Straight each 3 times. Blade side



Ultrasonic Mode

### 3 T-zone & Sides of the Nose

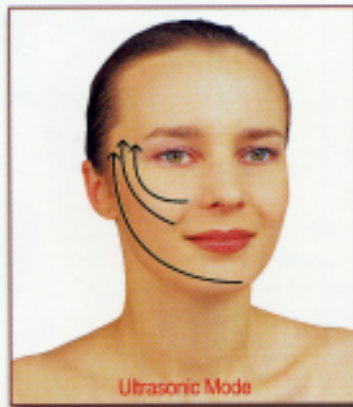
A gentle massaging of the T-zone & sides of the Nose, 10 times. Blade side



Ultrasonic Mode

### 4 Mouth & Cheek Area

Massage the area around the Mouth using Straight motion, 10 times. Blade side



Ultrasonic Mode

### 5 Lines Around Cheek, Nose, Above & Under Lips

Use a gentle stroke, 10 times. Blade side



Ultrasonic Mode

### 6 Neck Area

Gently massage lines on Throat with a down to up motion, 10 times. (Do not touch center Area) Blade side

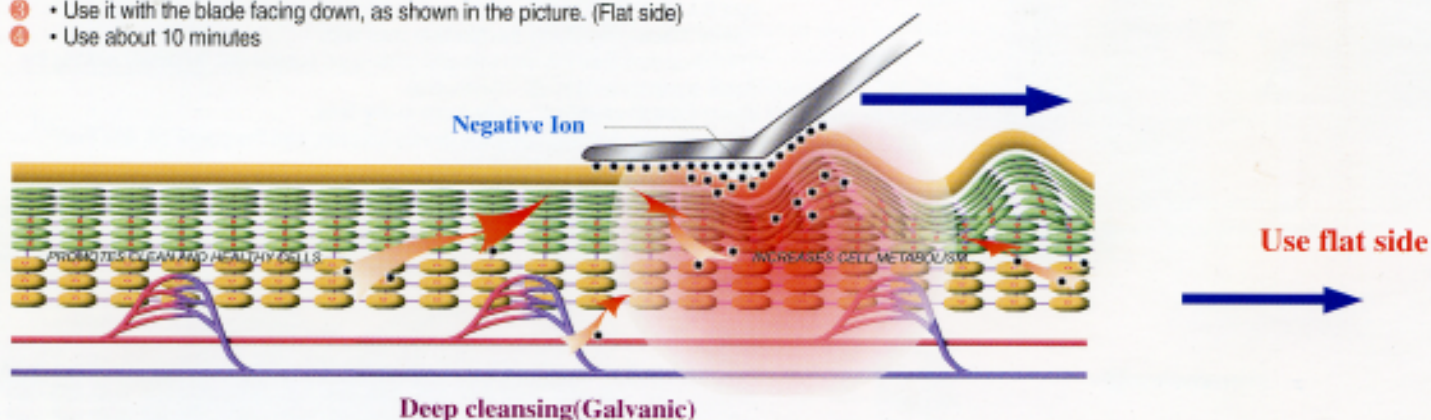
\* Use the sonic mode about once a week. For users with sensitive skin, once every two weeks is appropriate. Use a steam towel and facial steamer to help remove old cells.

# STEP 2. HOW TO USE NEGATIVE ION MODE

## The Negative ion mode helps to absorb fat and waste cells deep inside pores.

- 1 • Apply pure O+ (pH 6.5) to the skin.
- Push the power button.
- Push the [-ion+] button.
- Choose and push [high or low] (A red light is high, blue light is low)
- 2 • Apply pure O+(pH6.5) to the skin.
- 3 • Use it with the blade facing down, as shown in the picture. (Flat side)
- 4 • Use about 10 minutes

Rejuvena sL Combining Ultrasonic Massage to Enhance the Effectiveness of this Advanced Technology. Beautiful skin has a supple, soft, silky texture. Over time, the skin becomes dry, rough, and less resilient. Rejuvena sL's Ultrasonic System helps encourage the body's natural beauty rhythms to restore a younger-looking appearance while bringing vitality and smoothness to the skin.



### STEP 2. NEGATIVE ION FUNCTION.

Deep cleansing-ion delivers nourishment into the skin, using electrical repulsion. The skin begins to build up old & dead cells with waste materials. Negative ions dramatically enhance your skin's natural condition. Decreases appearance of lines and wrinkles, increases moisturization, for healthier, younger-looking skin, today and tomorrow. Negative Ion massages will give you a soft and supple skin and deep cleansing. Fine wrinkles are a sign that the skin is aging, and also a sign of dry skin. The Rejuvena sL system's negative ions eliminate waste materials and toxin from the skin.



#### 1 Facial Care Spray

By applying pure O+(6.5pH) Ionized Mineral Water to your skin, a Healthy, Youthful Glow will result. Reduces the Appearance of Fine, Dry Skin Lines. (Preliminary Preparation)



#### 2 Start by Gently Massaging Forehead & Cheeks(Ultrasonic)

A slight stroking motion on the Forehead and cheeks, Short and Straight each 5 times. Flat side



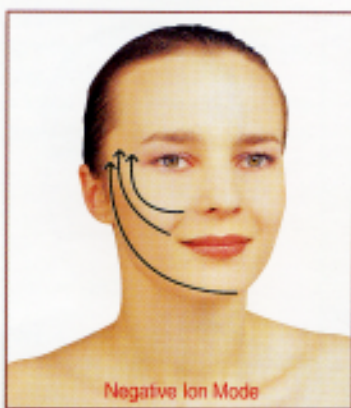
#### 3 T-zone & Sides of the Nose

A gentle massage of the T-zone & sides of the Nose, 10 times. Flat side



#### 4 Mouth & Cheek Area

Massage the area around the Mouth using Straight motion, 10 times. Flat side



#### 5 Lines Around Cheek, Nose, Above & Under Lips

Use a gentle stroke, 10 times. Flat side



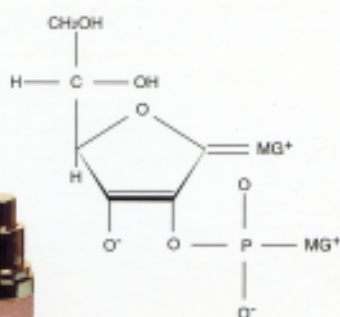
#### 6 Neck Area

Gently massage lines on Throat with a down to up motion, 10 times. (Do not touch center Area) Flat side

\*Use the Negative Ion mode everyday or twice a day.

# PURE O+, PURE C LIQUID, AND ESSENTIAL CREAM

Magnesium (Mg<sup>+</sup>) and Aromatherapy (Lavender)



**PURE O+** 50ml  
professional formulation

## PURE O PLUS IONIZED MINERAL WATER PROFESSIONAL FORMULATION

SAFETY - ALLERGY DERMATOLOGIST TESTED.

Richway PURE O PLUS, Ionized mineral water. Control pH level 6.5 protect your younger looking skin. This technologically advanced moisturizing protects the skin from damage and repairs the already damaged skin.

Directions : Spray before using the Rejuvena Ultrasonic or Negative Ions. Outward motion to face and neck, avoiding the eye area.

## PURE O PLUS WITH AROMATHERPY(LAVENDER)

Lavender has been extensively used in herbalism. An Infusion of lavender is claimed to soothe and heal. Lavender is frequently used as an aid to sleep and relax. Extract of lavender is claimed to heal acne. It is also used in the treatment of skin burns and inflammation. There is scientific evidence to support the effectiveness of some of these remedies. Especially the anti-inflammatory effect.

Ingredients : Water(Aqua), Magnesium, Lavender Extract.

## PURE C LIQUID IONIZED VITAMIN C. PROFESSIONAL FORMULATION

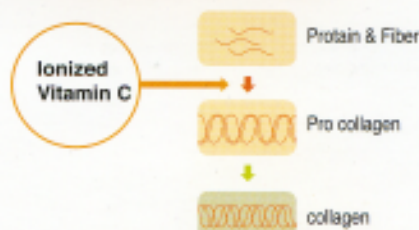
SAFETY - ALLERGY DERMATOLOGIST TESTED.

PURE C. Liquid Advanced C serum is a Unique, oil free patented Vitamin C formulation that contains powerful Anti-oxidants designed to help reduce the visible signs of aging and sagging skin.

Directions : Use before using the Rejuvena Ionzyme mode. Use outward motion to face and neck, avoiding the eye area.

Ingredients : Water(Aqua). Ascorbic Acid. Zinc Sulphate Glycine. Sodium. Grape seed. Methyc paraben.

Increase Collagen



L-ascorbic acid

Ionized Vitamin C  
Increase Collagen



**PURE C LIQUID**  
Powerful anti-oxidants



**BIO ESSENTIAL CREAM**

Net wt. 1.7oz(50g)



## BIO ESSENTIAL CREAM PROFESSIONAL FORMULATION

SAFETY - ALLERGY DERMATOLOGIST TESTED.

Essential cream is designed to reduce the appearance of sagging skin and wrinkles.

Direction for use : Gently blend the cream over your skin, using long, smooth, upward strokes after finishing the ionzyme treatment.

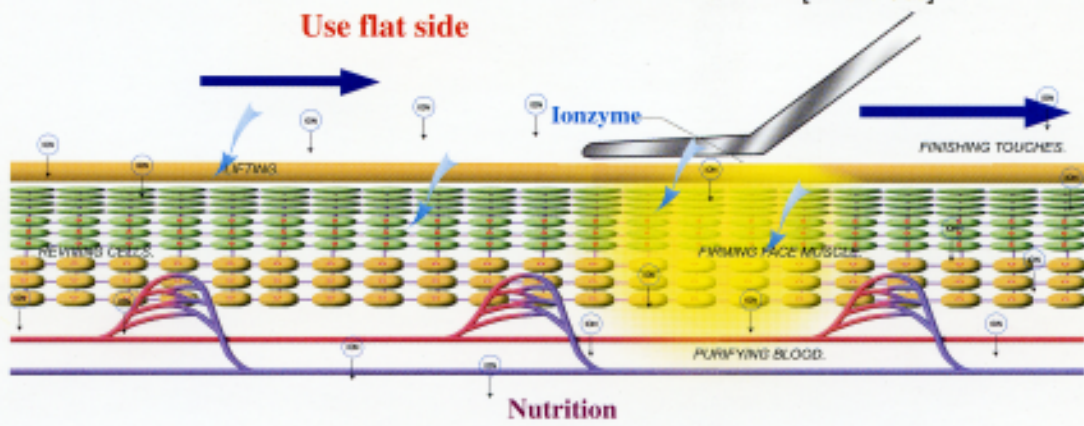
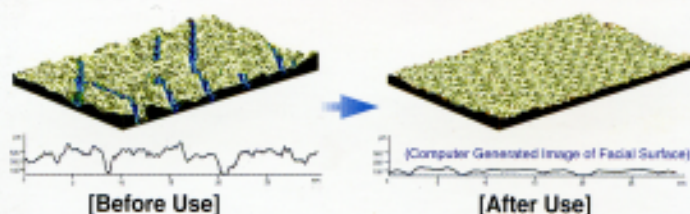
Ingredients : Water(Aqua). Hyaluronic Acid. Squalane. Elastin. Tocopherol. Acetate. Methyl paraben.

PURE O+ WITH MAGNESIUM (MG<sup>+</sup>) AND AROMATHERPY (LAVENDER)

# STEP 3. HOW TO USE IONZYME OR +ION

- 1 • Apply pure C liquid to the skin.
  - Push the power button.
  - Push the [ionzyme] button.(or push the +ion mode)
  - Choose and push [high or low] (A red light is high, blue light is low)
  - 2 • Apply pure C Liquid(ionized vitamin C) to the skin.
  - 3 • Use it with the blade facing down. (Flat side)
  - 4 • Moving from the lower part of the face to the upper part of the face will have skin lifting effect.
- When finished, apply [Essential Cream] \*Richway's Cosmetic Code 3.

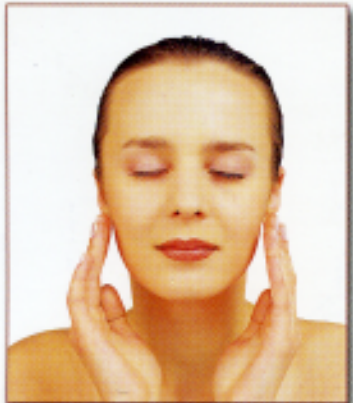
Experience the effectiveness of the Ultrasonic and Negative Ion System in improving Skin Roughness



The ionzyme mode helps the original skin absorb moisture and nutrients, after the old cells have been removed. The mixture of sonophoresis and ion topophoresis allows the beneficial substances of cosmetics to be delivered more efficiently into the skin.

## STEP 3. IONZYME FUNCTION(SONIC AND POSITIVE ION COMBINATION)

As sonophoresis and ion topophoresis happen at the same time, the results will turn out even better. Widens the gap between the cells by the ultrasonic waves, and the electrical repulsion of the ion topophoresis will help the beneficial substances of the cosmetics to more effectively penetrate the skin. Ionzyme or Positive Ions penetrate quickly and deeply into the skin. It prevents freckles, acne, and wrinkles by keeping the skin clean and soft from the effects of Ionized Vitamin C.



**1 Ionized vitamin C**  
By applying pure C liquid ionized vitamin C to your skin, a Healthy, Youthful Glow will result. Reduces the Appearance of Fine, Dry Skin Lines.



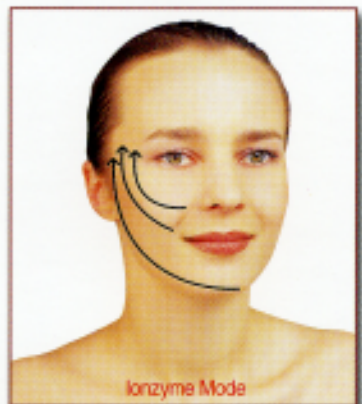
**2 Start by Gently Massaging Forehead & Cheeks(Ultrasonic)**  
A slight stroking motion on the Forehead and cheeks, Short and Straight each 5 times.  
Flat side



**3 T-zone & Sides of the Nose**  
A gentle massaging of the T-zone & sides of the Nose, 10 times.  
Flat side



**4 Mouth & Cheek Area**  
Massage the area around the Mouth using Straight motion, 10 times.  
Flat side



**5 Lines Around Cheek, Nose, Above & Under Lips**  
Use a gentle stroke, 10 times.  
Flat side



**6 Neck Area**  
Gently massage lines on Throat with a down to up motion, 10 times. (Do not touch center Area)  
Flat side

\* Use the Ionzyme mode everyday or twice a day.

# REJUVENA sL ULTRASONIC FACIAL CARE

## 1) Ultrasonic Massage / Unbelievable effects

The Rejuvena sL generates a wide range of ultrasonic vibrations, the 30,000 vps setting allows nutrition to penetrate deep into the skin through the Netzschicht layer. The result is healthy and supple skin, and better blood circulation, removing wrinkles. The special effect of the micro-vibrations of ultrasonic massage is the double effect of a pull and push movement in a vacuum, the micro-vibrations generated by ultrasonic massages all the skin cells. When the skin cells are influenced by the micro-vibrations, the waste material and toxin are eliminated from the cells naturally. When the vibrations stop, fresh nutrition is absorbed into the cells to fill the space made by the elimination of waste materials. When these processes are repeated, enough hormones are supplied to the skin cells that the cells are reactivated.

## 2) Negative Ions / Deep cleansing(Galvanic)

When Negative Ions are used, it greatly improves blood circulation, and it penetrates deeply into the derma layer and basic cell layer, as well. This removes the wrinkles, contracts the sweat pores, and makes the skin supple. The stimulus of Negative Ions deeply massages face muscles removing deep wrinkles.

## 3) Ionzyme or Positive Ions are used with the Ionized Vitamin C

The Rejuvena sL was developed considering various characteristics of the body. So, various effects can be achieved with only one massage. Especially, you will see the better results of moisturizing and preventing wrinkles with the Ionized Vitamin C.

## 4) In conclusion, the Rejuvena sL does the following :

Aged skin will become supple. Since Ultrasonic waves stimulate skin muscles with vertical and centrifugal movements, Ultrasonic reactivates the aged skin cells, making the skin supple and healthy, making a beautiful face surface.



You will get clean skin. The major reason for skin problems is waste material in the skin cells, and a drop of metabolism of the skin cells. Ultrasonic Micro-Vibrations (30,000 vps) penetrates deeply into the skin eliminating waste material, and stimulating the metabolism of the skin cells so it will give you healthy and clean skin.

## 5) Why does the Human Age?

Is there any possible way to maintain a youthful look? To satisfy the desire of women who want to keep a youthful look, new technologies to prevent aging have been developed. The cause of wrinkles will be decreased. The skin has a hard time absorbing nutrition. The remarkable effect of the Rejuvena sL High Tech Ultrasonic Skin Care System (which was developed considering the above physiological mechanisms) has been proven to reverse the Aging Process.

## REJUVENA sL Combining Ultrasonic Massage to Enhance the Effectiveness of Advanced Technology.



Beautiful skin has a supple, soft, silky texture. Over time, the skin becomes dry, rough, and less resilient. Rejuvena sL Ultrasonic System helps encourage the body's natural beauty rhythms to restore a younger-looking appearance while bringing vitality and smoothness to the skin.

## BE CAREFUL WHEN USING THE REJUVENA SL

- 1) Keep it away from water in the bathroom or sauna.
- 2) When used more than 30 continuous minutes, the unit will turn off automatically.
- 3) If your skin becomes irritated, stop using immediately and consult your therapist.
- 4) Do not use on irritated skin, such as abscesses or eczema.
- 5) When you finish massaging, clean the roller with a soft, clean cloth or tissue paper.
- 6) The Rejuvena sL is a high-tech precision instrument. Do not store it where the temperature or humidity is high. Prevent physical shock such as dropping. Do not leave in your car on a hot day.
- 7) If you have not used the Rejuvena sL for an extended period of time, the unit should be charged. It can be used for a total of approximate. 2 hours before it needs to be charged again.
- 8) Keep the charger clean by wiping it with a clean cloth or tissue paper.
- 9) Do not put any other object in the charger.
- 10) Only use an adapter that is compatible with the Rejuvena sL, or the unit can be damaged.
- 11) Be very careful when disassembling the Rejuvena sL because it is a precision instrument that requires care in handling.
- 12) If there is any problem with the unit, contact RichWay International to request repair service. (The warrantee will not be honored if you disassemble the instrument.)
- 13) The instrument automatically turns off after 30 minutes. This does not mean there is any problem with the unit, it is a safety feature.
- 14) If you encounter any problem while using the Rejuvena sL, contact RichWay International at (808)589-2800, and ask for the Service Department.
- 15) Damage caused by mishandling or carelessness will not be covered by the warrantee.

# USER'S MANUAL

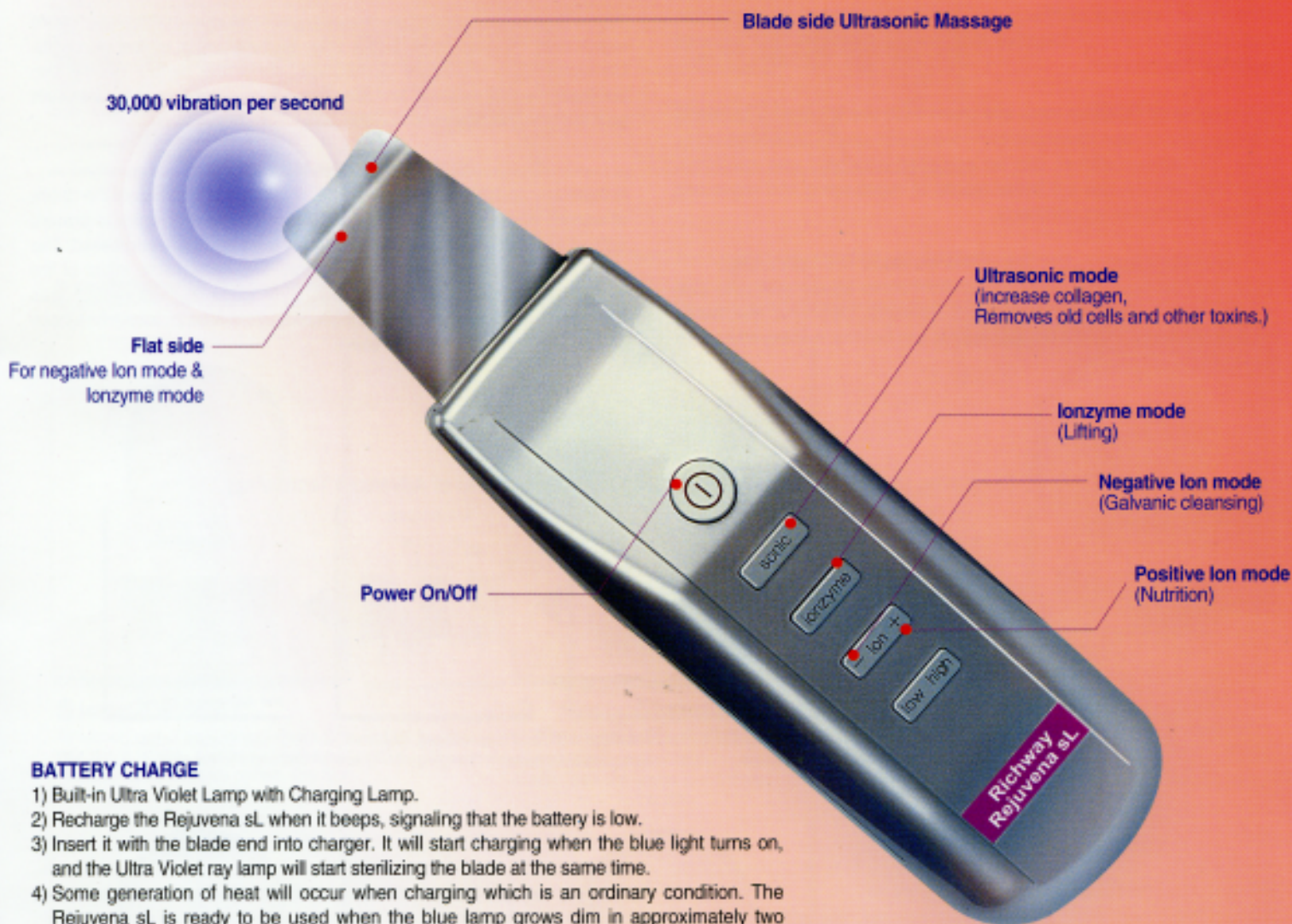
## REJUVENA sL ULTRASONIC AND ION SKIN CARE SYSTEM

Congratulations! You are a proud owner of a Rejuvena sL.

The Rejuvena sL is a high-tech skin treatment system. It will benefit everyone who uses this system. It makes you feel younger, and it promotes an active lifestyle. The Rejuvena sL is an advance care system that will beautify your skin and make it feel and look healthy. For more effective use, please read this manual carefully.

### INSTALLATION

- 1) First, find a good location to place the Rejuvena sL. (A flat and stable place.)
- 2) Insert the plug of the AC adapter in an AC outlet.
- 3) Put the body of the Rejuvena sL into the charger. When the unit is located properly, the indicator will light, and Charging will begin. (When the indicator doesn't light, reposition the unit it is mounted properly and the light will appear.)



### BATTERY CHARGE

- 1) Built-in Ultra Violet Lamp with Charging Lamp.
- 2) Recharge the Rejuvena sL when it beeps, signaling that the battery is low.
- 3) Insert it with the blade end into charger. It will start charging when the blue light turns on, and the Ultra Violet ray lamp will start sterilizing the blade at the same time.
- 4) Some generation of heat will occur when charging which is an ordinary condition. The Rejuvena sL is ready to be used when the blue lamp grows dim in approximately two hours.

### CHARACTERISTICS OF THE REJUVENA sL.

The Rejuvena sL has 5 switches.

- 1) The First one is the Power switch (Upper Switch)
- 2) The Second one is the Ultrasonic Switch (30,000/vps)
- 3) The Third one is the Ionzyme Switch (Ultrasonic and Ion coming same time.)
- 4) The Fourth one is the Ion(+) and Ion(-) Switch (Ion+ is Nutrition and Ion- is galvanic cleansing.)
- 5) The fifth one is Low or High control switch.

\* Preliminary Preparation. Use Pure O+ for Facial Care. Pure O+ for troubled skin treatment which restores your skin to a healthy condition.